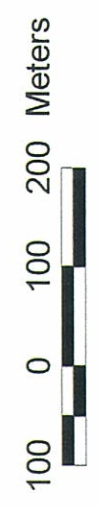
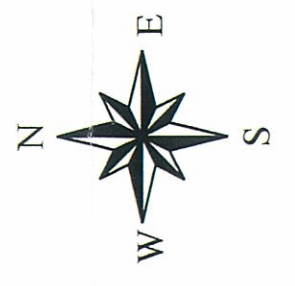
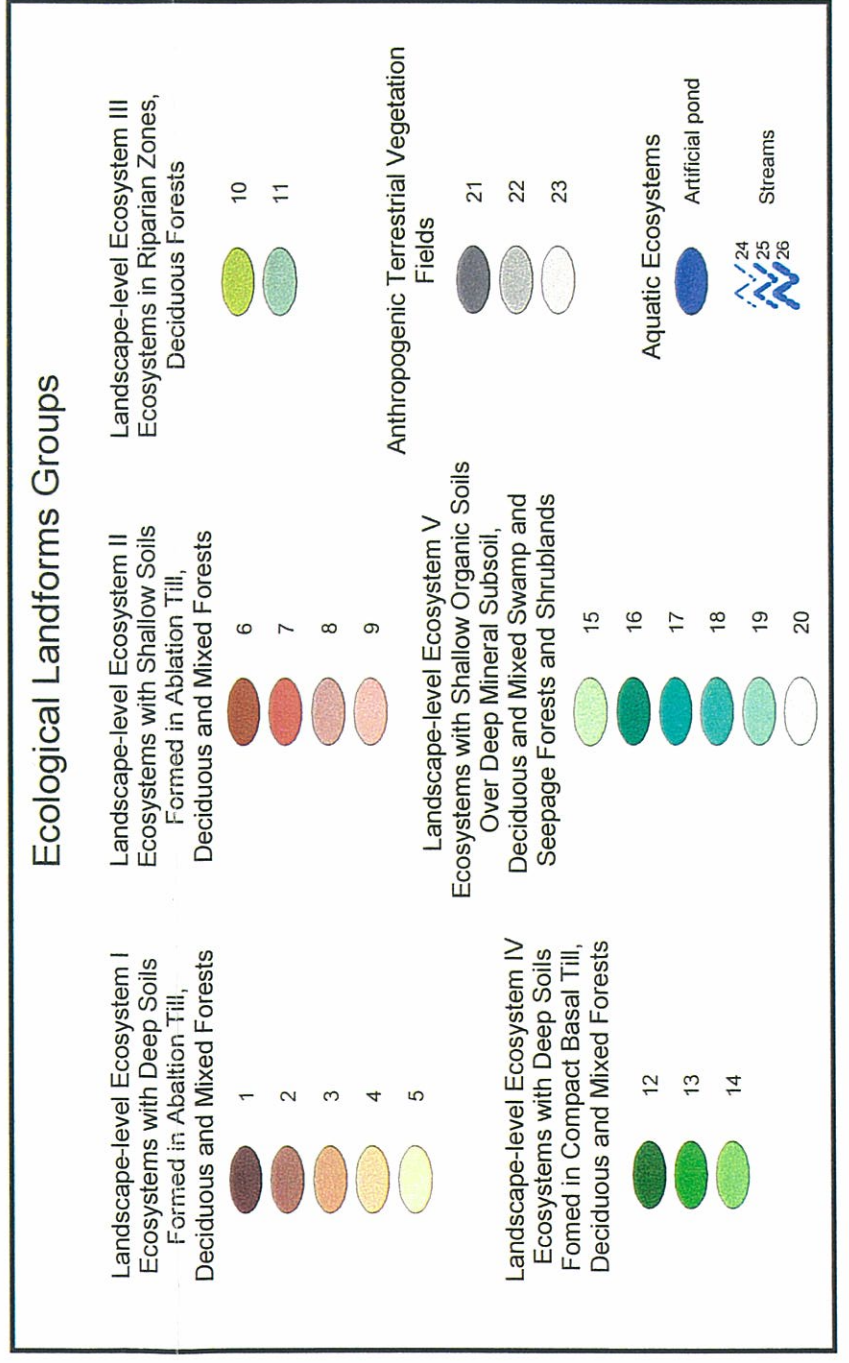


Landscape Ecosystem Map
Guthrie-Bancroft Farm
Lincoln and Bristol, Vermont



Ecosystem mapping and classification
 by Marc Lapin, Cornwall, Vermont

GIS Processing and map layout by
 R. J. Turner Company, Bristol, Vermont

Field work completed : Summer-Fall 1999
 Mapping completed : Winter 2000



Landform-Level Ecosystem Map
Guthrie-Bancroft Farm
Lincoln and Bristol, Vermont

Minor Landform-Level Ecosystems

- Abalation Till Deposits, Deep or Shallow over Bedrock
- Deep Compact Basal Till Deposits
- Riparian Features
- Shallow Organic over Deep Compact Basal Till Deposits (Wetlands)

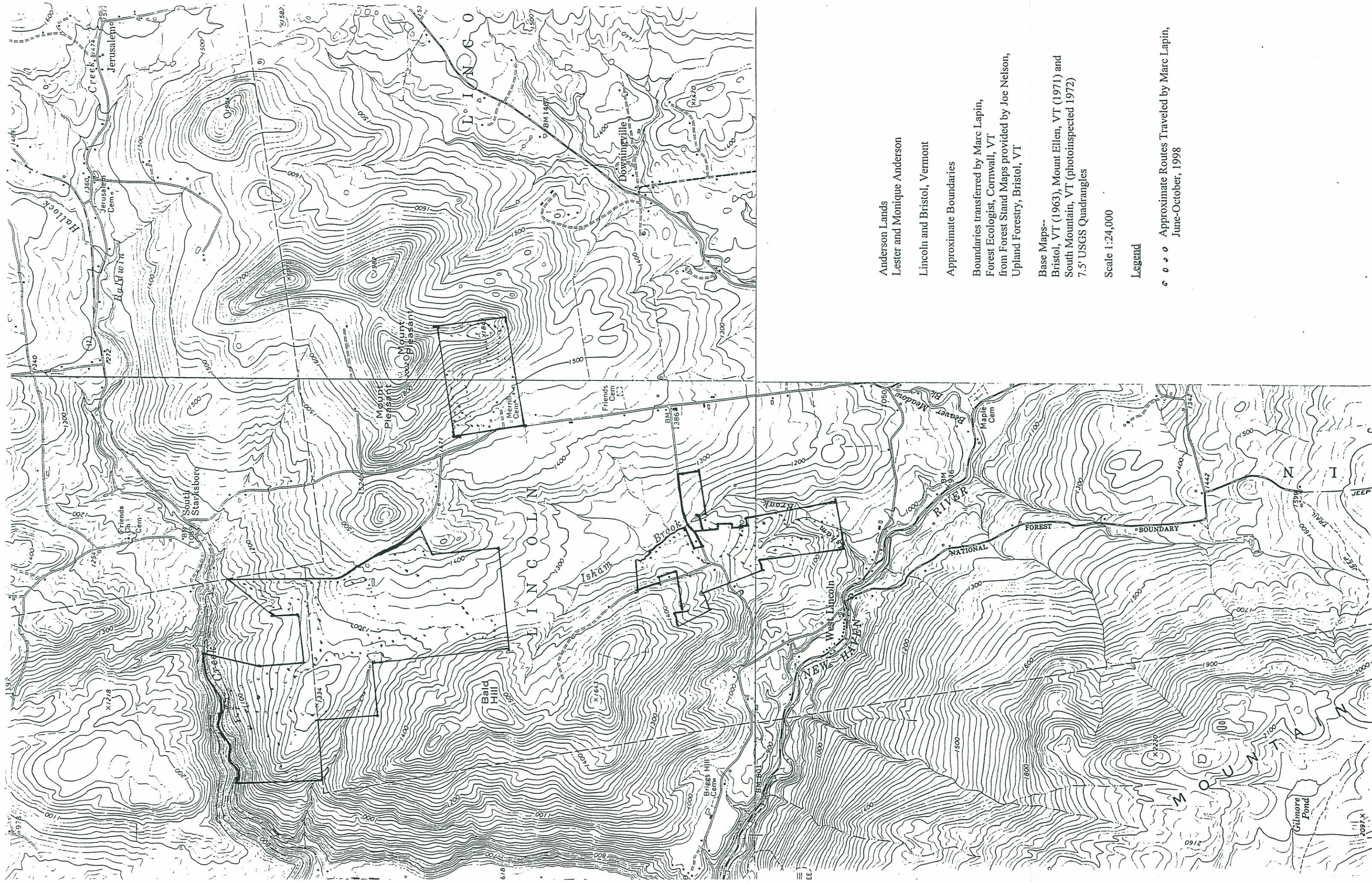
Other Features

- Pond
- Fields
- Streams

Ecosystem mapping and classification
 by Marc Lapin, Cornwall, Vermont

GIS Processing and map layout by
 R. J. Turner Company, Bristol, Vermont

Field work completed : Summer-Fall 1999
 Mapping completed : Winter 2000



Anderson Lands
Lester and Monique Anderson

Lincoln and Bristol, Vermont

Approximate Boundaries

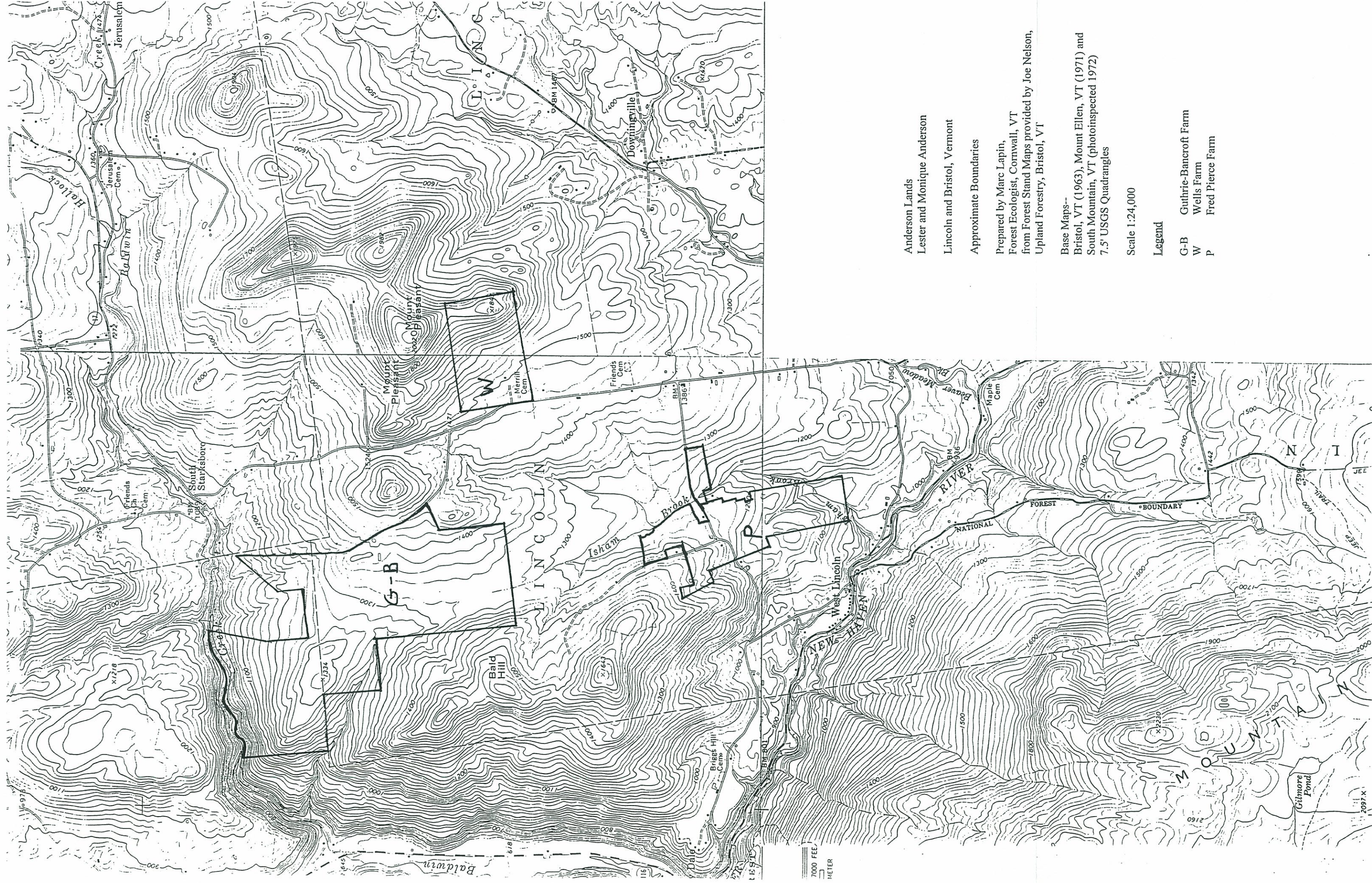
Boundaries transferred by Marc Lapin,
Forest Ecologist, Cornwall, VT
from Forest Stand Maps provided by Joe Nelson,
Upland Forestry, Bristol, VT

Base Maps--
Bristol, VT (1963), Mount Ellen, VT (1971) and
South Mountain, VT (photoinspected 1972)
7.5' USGS Quadrangles

Scale 1:24,000

Legend

o o o o Approximate Routes Traveled by Marc Lapin,
June-October, 1998



Anderson Lands
Lester and Monique Anderson

Lincoln and Bristol, Vermont

Approximate Boundaries

Prepared by Marc Lapin,
Forest Ecologist, Cornwall, VT
from Forest Stand Maps provided by Joe Nelson,
Upland Forestry, Bristol, VT

Base Maps--
Bristol, VT (1963), Mount Ellen, VT (1971) and
South Mountain, VT (photoinspired 1972)
7.5' USGS Quadrangles

Scale 1:24,000

Legend

- G-B Guthrie-Bancroft Farm
- W Wells Farm
- P Fred Pierce Farm